

Overview

Getting Started

Using Component Inspector

- Layout Panel

- Behavior Panel

- Event Panel

Customization

- Create Custom Header

- Create Custom Background

Calendar Events

- Using XML

- Using Icons

Advanced Events

- Day Event

- Range Event

- Monthly Event

- Yearly Event

- Weekly Event

- Pattern Attribute

ActionScript

- API

- Event Listener

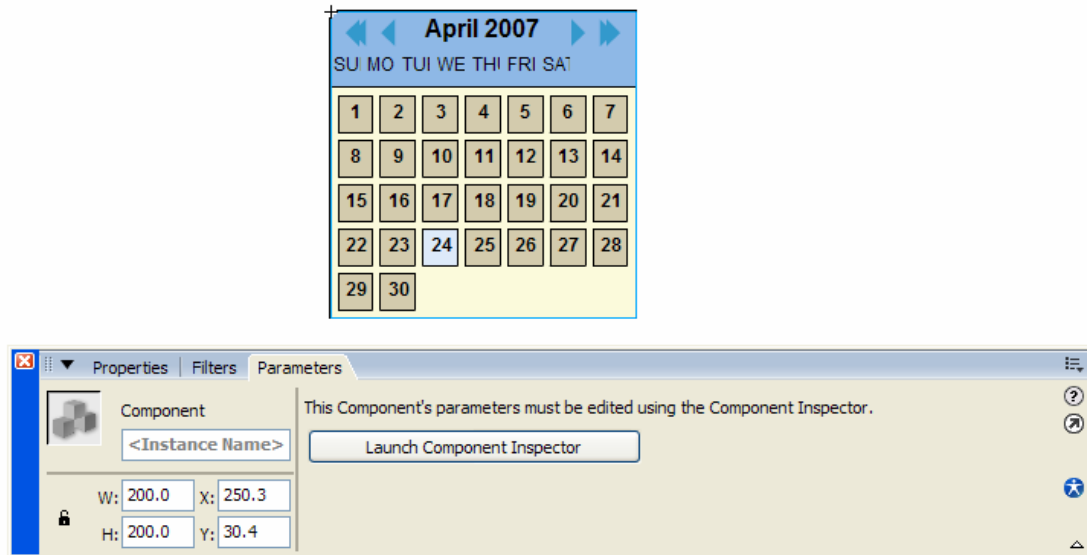
- Add Event and Icon

Overview

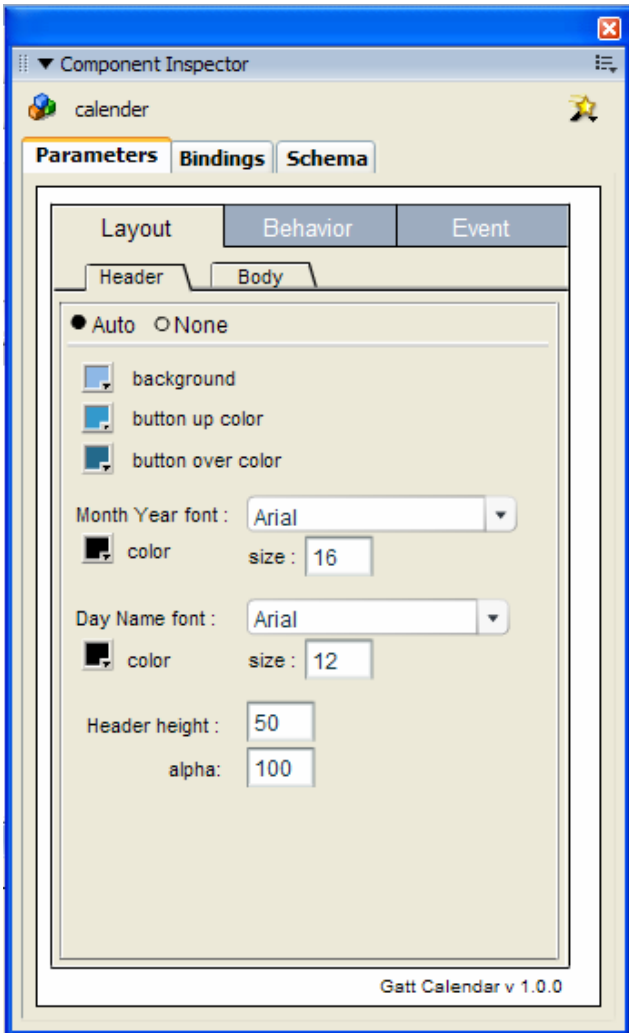
The Gatt Flash Calendar is used to create calendar. It can dynamically change the events via an external XML file. It has various type of event that can set. It is fully customizable to suit your design without hard coding.

Basic – Getting Started

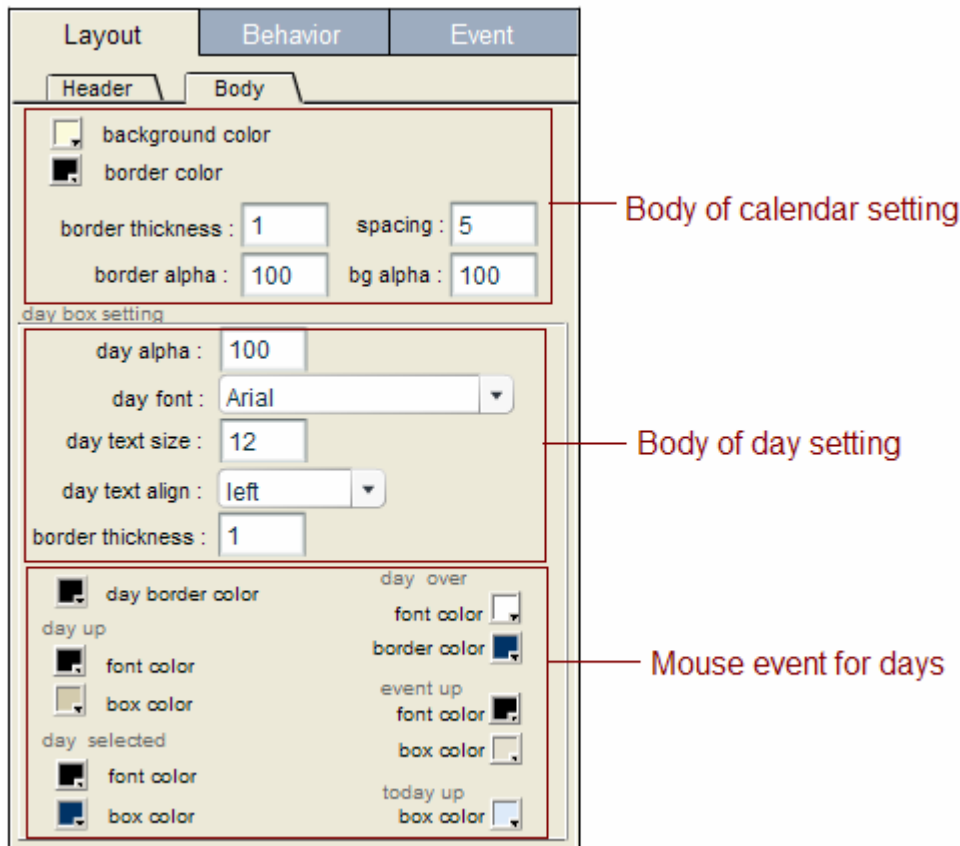
1. Having installed the calendar component using the [Adobe/Macromedia Extension Manager](#), open Flash, start a new file and save it.
2. Press Ctrl+F7(Win) or Cmd+F7(Mac) to open the Component Panel. Open the GattCalendar folder and drag a copy of calendar component onto the stage.



3. Select the calendar that's on the stage and Press Alt+F7 (or press 'Launch Component Inspector' button on the Parameters Panel) to open the Component Inspector.
4. Here is the overview of Component Inspector. You may need to resize the panel to see the whole panel.



Using Component Inspector – Layout Panel



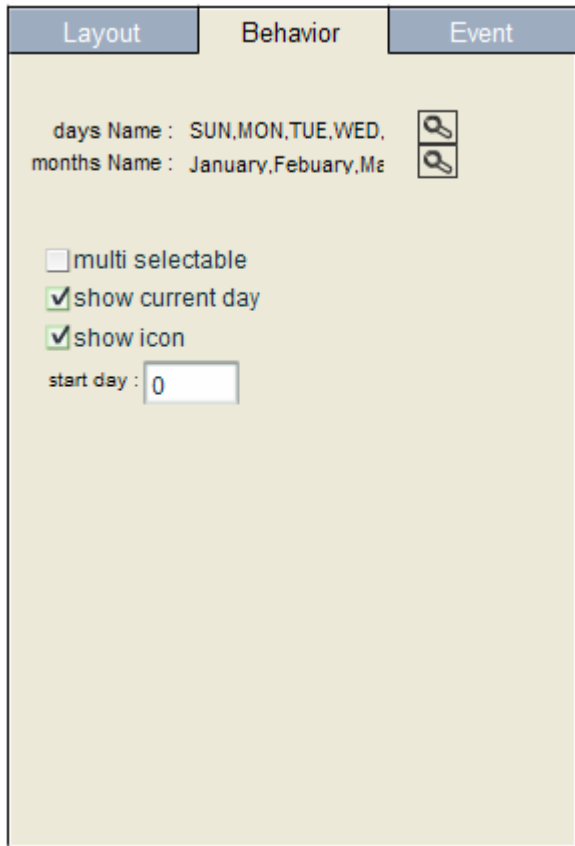
1. Layout Panel includes Header and Body Panel. Header Panel is straight forward and is setting panel for Header.


You can choose 'none' in the Header panel to disable the auto generate header if you wish to create custom header.

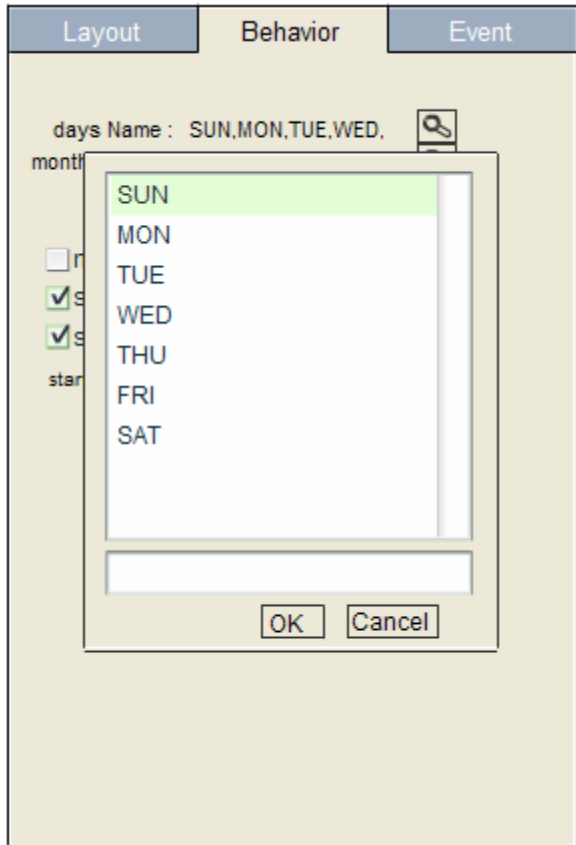
See Create Custom Header chapter for more on Custom Header.

2. Body Panel includes Properties that can change the calendar layout and also the mouse event on the day box.

Using Component Inspector – Behavior Panel



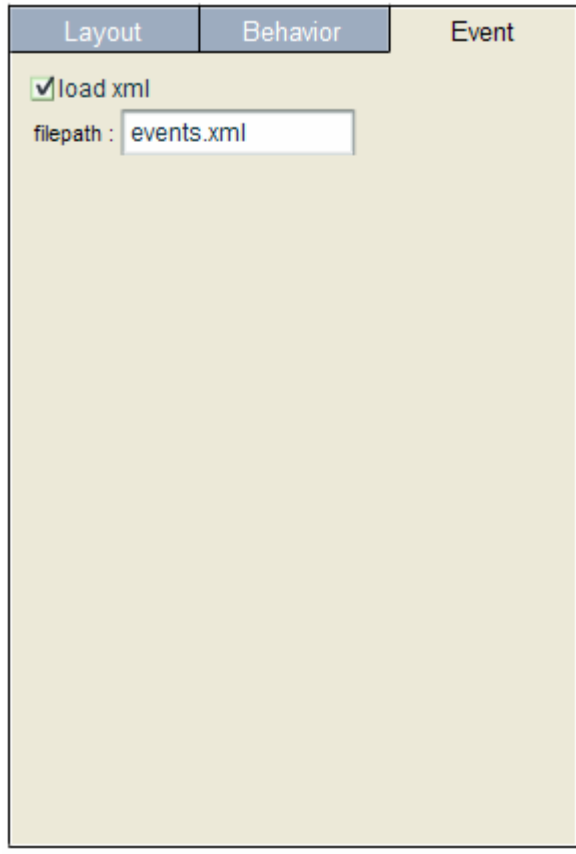
1. To change the name of days, press on the  button to open the list panel.



2. Select the day you wish to change from the list.
3. Change the name from the input field at the bottom of list.
4. Press OK.

There have the same process on modifying the months name.

Using Component Inspector – Event Panel

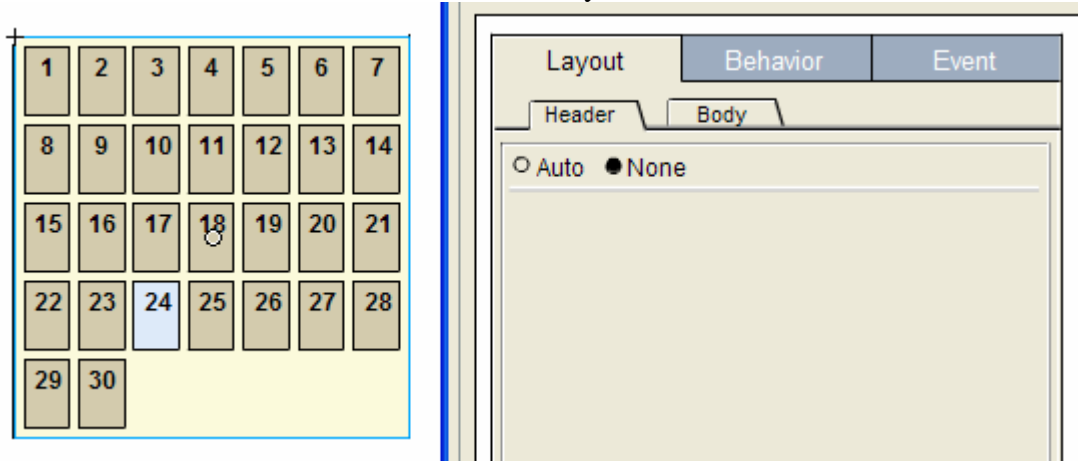


1. The events of calendar are load from a external XML file. Enter the XML file path to load events.

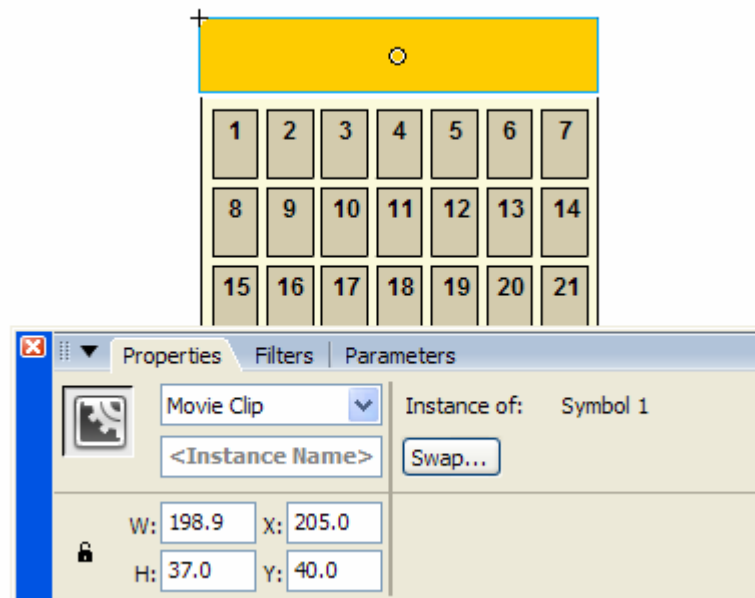
For more details on the XML structure of events, see Using XML chapter.

Customization – Create Custom Header

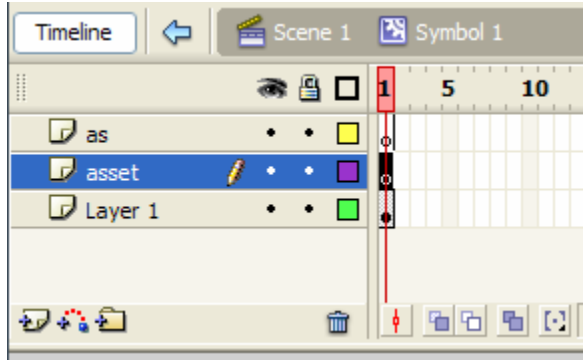
1. To create a custom header, first you have to disable the auto header by select 'none' in the Header Panel which is in the Layout Panel.



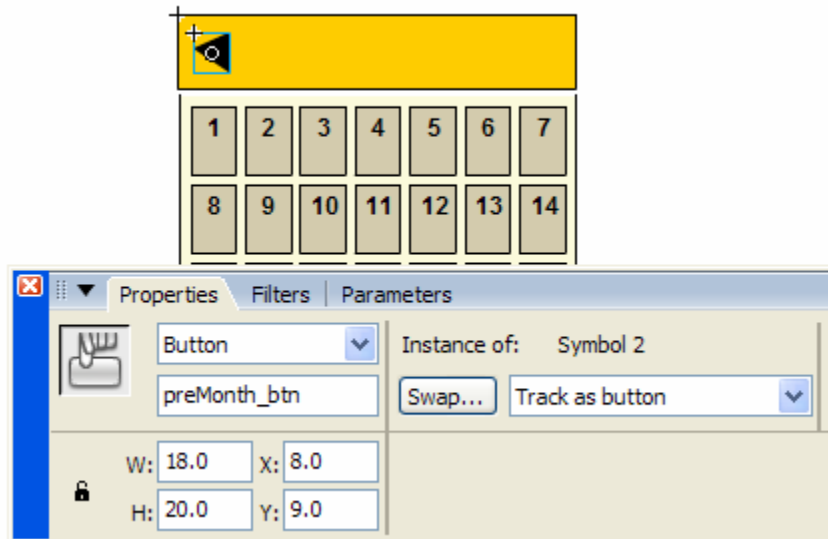
2. Draw your header graphic Movie Clip in the same place with the component. The name of MovieClip doesn't matter to create custom header.



3. Double click on the MovieClip to edit the MovieClip.
4. Create two new layer and name it 'as' for action script and 'asset' for buttons and text field.



5. Create button for navigation of previous month on the 'asset' layer, and give an instance name of 'preMonth_btn'.



6. Create button for previous year, next month and next year, and give them instance name of 'preYear_btn', 'nexMonth_btn' and 'nexYear_btn.'

6. Create Dynamic type of Text field for Year and Month and give them an instance name of 'year_txt' and 'month_txt'.

7. copy and paste the following action script and paste them in the 'as' layer.

```
// create variable reference to calendar component
var calendar = _parent.calendar;
```

```
//set the button event for buttons
preMonth_btn.onRelease = function() {
    calendar.preMonth();
}
```

```
};
preYear_btn.onRelease = function() {
    calendar.preYear();
};
nexMonth_btn.onRelease = function() {
    calendar.nexMonth();
};
nexYear_btn.onRelease = function() {
    calendar.nexYear();
};

//create listener for component and response action.
var lis = {};
lis.onInit = lis.onNavigate=function (e) {
    month_txt.text = e.monthName;
    year_txt.text = e.year;
};

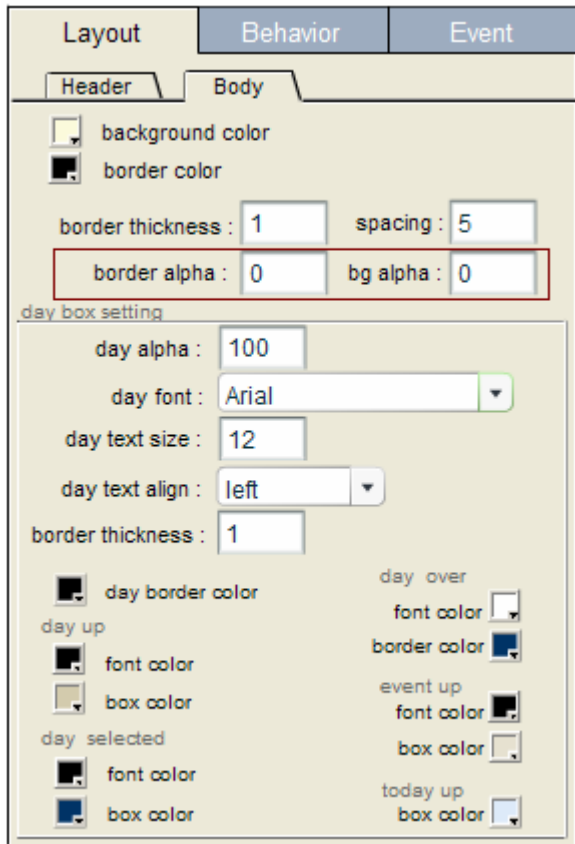
//add event listener to component
calendar.addEventListener("onNavigate", lis);
calendar.addEventListener("onInit", lis);
```

8. Now back to the calendar component and give it an instance name of 'calendar'.
9. Done. The buttons and text field should now works with the component.

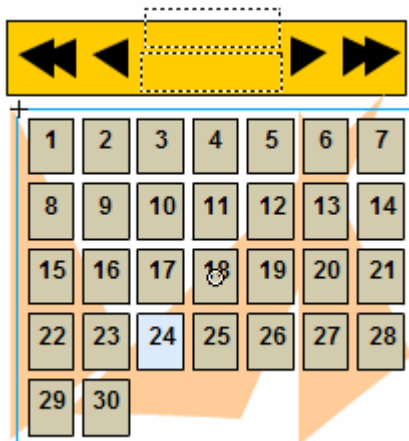
You can refer to the flash file of this tutorial in custom header folder.

Customization – Custom Background

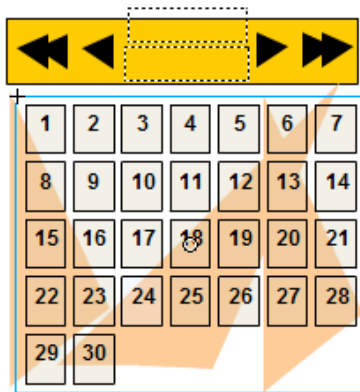
1. To create custom background, change the alpha of border and background to 0.



2. Now you can create your background graphic behind the calendar.



3. You even can set the alpha of days to see thought the day boxes.



Layout Behavior Event

Header Body

background color
 border color

border thickness : 1 spacing : 5

border alpha : 0 bg alpha : 0

day box setting

day alpha : 30

day font : Arial

day text size : 12

day text align : left

border thickness : 1

Calendar Events – Using XML

1. Open your Flash file in which you are using the calendar component, or create a new Flash file and drag the calendar component onto the stage. If you are creating a new Flash file, ensure that you save it now.
2. Open your favourite plain text editor (for example *Notepad* on Windows or *TextEdit* on Mac) and start a new file.
3. Begin your file with the following line:

```
<?xml version="1.0" encoding="utf-8"?>
```

This is the standard xml declaration.

4. Add the following lines to your xml file. (The bold lines are the new additions)

```
<?xml version="1.0" encoding="utf-8"?>  
<calender>  
</calender>
```

This is the root of all the xml elements.

5. Add the following lines to your xml file.

```
<?xml version="1.0" encoding="utf-8"?>  
<calender>  
<tags>  
</tags>  
</calender>
```

This is the events tags to define event icon linkageId to events.

6. Add the following lines to your xml file.

```
<?xml version="1.0" encoding="utf-8"?>  
<calender>  
<tags>  
</tags>  
<events>  
</events>  
</calender>
```

This is the events elements to add events to calendar.

7. Now you are ready to add icon and event elements. Add the following lines to your xml file.

```
<?xml version="1.0" encoding="utf-8"?>
<calender>
<tags>
<tag name="birthday" icon="cake" />
</tags>
<events>
</events>
</calender>
```

This line is to define the icon in flash library with have a linkageId 'cake' to 'birthday' tag name.

8. Add the following lines to your xml file.

```
<?xml version="1.0" encoding="utf-8"?>
<calender>
<tags>
<tag name= "birthday" icon= "cake" />
</tags>
<events>
<day title="birthday party" tag="birthday" date="15/9/2006"
disable="false">birthday party </day>
</events>
</calender>
```

This is a day event element to add into the calendar.
There have some attributes you can set for the event,

title	– the title for the event.
tag	– the tag of icon for the event.
date	– the date of event in format of DD/MM/YYYY
disable	– disable and not selectable by user, Have value of true or false.

9. You just added an event to the calendar. Save it to same directory of your flash file and name it 'events.xml'.

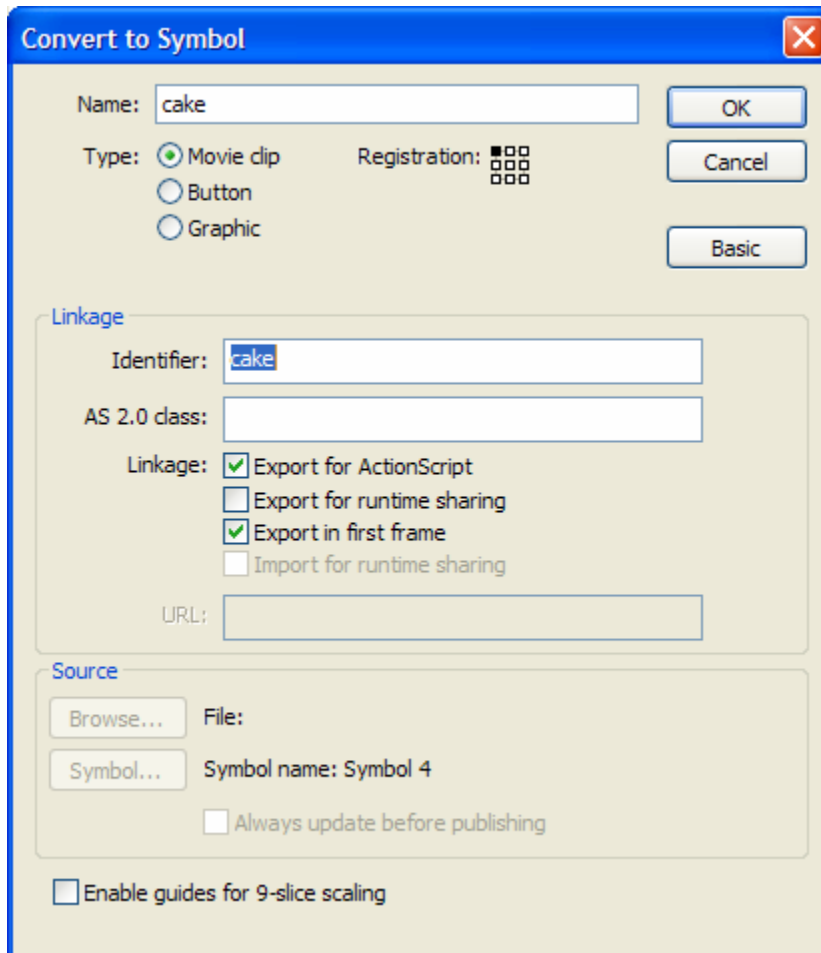
10. Back to your flash file and set the linkage Id of your cake icon to 'cake'. Then you are ready to go.

For more details on other type of events, see Advanced Event chapter.
For more details on creating icons, see Using Icons chapter.

Calendar Events – Using Icons

We will start this tutorial using the last flash example file we created.

1. Create your icon graphic for birthday and make it a MovieClip , assign it a linkage Id 'cake' .



2. Press Ok and delete the MovieClip from the stage. Now you have your 'cake' icon ready in Library for birthday event.
3. Open your XML file for events.
4. Ensure your tag element have the same name with the linkageId, which is bold font below:

```
<?xml version="1.0" encoding="utf-8"?>  
<calender>  
<tags>
```

```
<tag name="birthday" icon="cake" />
</tags>
<events>
<day title="birthday party" tag="birthday" date="15/4/2007"
disable="false">birthday party </day>
</events>
</calender>
```

5. Done.

For more details on the XML for events, see Using XML chapter.

Advanced Event – Day Event

Day event is the event on specify day only.

Day events have the event element like this line:

```
<day title="xmas party" tag="party" date="25/12/2007" disable="false"> this is a day  
event description. </day>
```

Here is the attribute summary of Day Event:

Attribute Name	Description	Example/Value
title	Title of the event	Mary's Birthday
tag	Tag name of the corresponding icon see more on Using XML chapter	birthday
date	Date of event that have the format of : DD/MM/YYYY	25/12/2007
disable	Disable and not selectable	true /false

Advanced Event – Range Event

Range event is event on a range of days.

Range events have the event element like this line:

```
<range title="discus about the project" tag="" from="2/8/2006" to="8/8/2006"
disable="false" selectWhole="true" >this is a range event description. </range>
```

Here is the attribute summary of Range Event:

Attribute Name	Description	Example/Value
title	Title of the event	Project
tag	Tag name of the corresponding icon see more on Using XML chapter	work
from	Start date of event that have the format of : DD/MM/YYYY	2/8/2006
to	End data of event that have the format of : DD/MM/YYYY	8/8/2006
selectWhole	Select whole range of event when users press on one of the day of event.	true/false
disable	Disable and not selectable	true /false

Advanced Event – Monthly Event

Monthly event is events that repeat with a pattern monthly.

Monthly events have the event element like this line:

```
<monthly title="get salary" tag="" pattern="1" monthDay="30"
startMonthYear="11/2003" endMonthYear="11/2100" disable="false"
selectWhole="false">this is a monthly event description. </monthly>
```

Here is the attribute summary of Monthly Event:

Attribute Name	Description	Example/Value
title	Title of the event	
tag	Tag name of the corresponding icon see more on Using XML chapter	
pattern	Repeat pattern of event. See more details on pattern attribute in Pattern Attribute chapter	
monthDay	Date of each month of event.	30
startMonthYear	Start Month and Year of event, in format of: MM/YYYY	11/2003
endMonthYear	End Month and Year of event, in format of: MM/YYYY	11/2100
selectWhole	Select whole range of event when users press on one of the day of event.	true/false
disable	Disable and not selectable	true /false

Advanced Event – Yearly Event

Yearly Event is events that occur in pattern yearly.
Yearly events have the event element like this line:

```
<yearly title="birthday" tag="birthday" pattern="1" month="9" monthDay="15"
startYear="1984" endYear="2100" disable="false" selectWhole="false"> this is a yearly
event description. </yearly>
```

Here is the attribute summary of Yearly Event:

Attribute Name	Description	Example/Value
title	Title of the event	
tag	Tag name of the corresponding icon see more on Using XML chapter	
pattern	Repeat pattern of event. See more details on pattern attribute in Pattern Attribute chapter	1,0
month	Month of the event	9
monthDay	Month date of the event.	15
startYear	Start Year of the event	1984
endYear	End Year of the event	2100
selectWhole	Select whole range of event when users press on one of the day of event.	true/false
disable	Disable and not selectable	true /false

Advanced Event – Weekly Event

Weekly Event is event that occurs in pattern weekly.

Weekly event have the event element like this line:

```
<weekly title="cleaning" tag="cleaning" pattern="1,0" weekDay="0"
startWeek="11/2005:2" endWeek="11/2100:3" disable="false" selectWhole="false">this
is a weekly event description.</weekly>
```

Here is the attribute summary of Yearly Event:

Attribute Name	Description	Example/Value
title	Title of the event	
tag	Tag name of the corresponding icon see more on Using XML chapter	
pattern	Repeat pattern of event. See more details on pattern attribute in Pattern Attribute chapter	1,0
weekDay	Day of week of event, start from 0 to 6 correspond to Sunday to Saturday.	0
startWeek	Start week of event, in format of: MM/YYYY:W	11/2005:2 (second week of 11/2005)
endWeek	End week of event, in format of: MM/YYYY:W	11/2100:3 (third week of 11/2100)
selectWhole	Select whole range of event when users press on one of the day of event.	true/false
disable	Disable and not selectable	true /false

Advanced Event - Pattern Attribute

Pattern attribute needed in monthly, yearly and weekly events, to define the pattern occur of the event.

In this attribute, uses 1 to represent occur and 0 to represent not occur.

Example:

Ex1) I found that the best way to explain this attributes is taking World Cup as an example.

World Cup event occur once at every 4 years. So the pattern is 1,0,0,0, Start from year 1950.

Ex2) My company dinner occur once at every 2 years. So the pattern is 1,0 from the start year.

ActionScript – API
Link to API Documentation

ActionScript – Event Listener

Calendar component contains a list of event that can listener to.
Here is the summary of events that dispatch at different action:

onDateRollOver
onDateRollOut
onDatePress
onDateRelease
onDateSelect
onDateUnselect
onNavigate
onInit
onXMLLoadError
onLoadXML

Events that bold above have the same structure of event object which have attribute of following:

Attribute Name	Description	
target	Source of event, the calendar.	
type	Name of Event.	
date	Date Class object of the date.	
dateStr	Date in String format, ex. '1/1/2007'.	
iconClip	The icon MovieClip of the date.	
events	Array that contains event objects of the date. Each of the event objects represent the event that add to the date. Event object contains:	
	title	Title of the date event
	date	Date in String format, ex. '1/1/2007'
	tagID	Tag Name of the Icon
	selected	True/False
	disable	True/False
	content	The description of event.

Example of using the event listener:

```
//create the listener object
var lis={ };

//set the respond function to listener
lis.onDateRollOver=function(evt){
    trace("Roll over date:"+evt.dateStr);
}

//add listener to the calendar
myCalendar.addEventListener("onDateRollOver",lis);
```

ActionScript – Add Event and Icon

To add a Icon Tag to calendar using ActionScript, use addTag () method.

To add an event to calendar using ActionScript, use addEvent() method.

Here is an example on how to do it.

Give the calendar an instance name of 'myCalendar'.

Action Script at frame:

```
//add Icon Tag to calendar
```

```
myCalendar.addTag({name: "birthday ",icon: "cake "});
```

```
//add day event to calendar
```

```
myCalendar.addEvent({type: "day", title: "birthday", tag: "birthday", date:  
"1/1/2007",disable: false, });
```

Other than the 'type' attribute, all attributes of events are same with XML attributes, for more on these attributes, see Using XML chapter.

Values of 'type' attribute:

Day event: day

Range event: range

Monthly event: monthly

Yearly event: yearly

Weekly event: weekly